



Donaldson.  
FILTRATION SOLUTIONS

# Inlet Barrier Filter Systems for MD 500 and MD 900/902 Helicopters



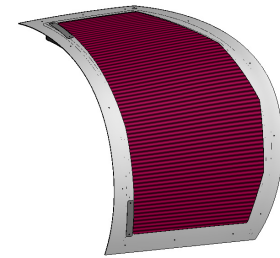
# TAKING FILTRATION TO NEW HEIGHTS

Dust, sand and debris routinely attack your turbine engines, hampering efficiency and impacting reliability.

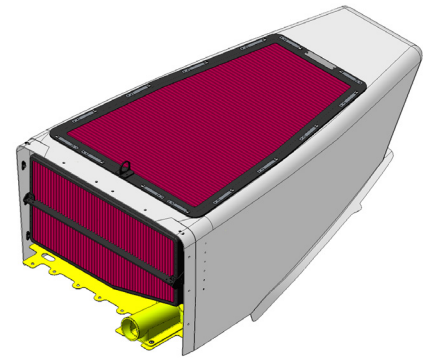
Installing an Inlet Barrier Filter (IBF) system is the most effective way to protect your engine and help meet established engine time between overhaul requirements.

## Donaldson's IBF system is available factory direct and delivers:

- + More power available than alternate sand filter options
- + Longer engine life due to elimination of erosion
- + Reduced engine maintenance cost



MD 900/902



MD 500

## Product Overview

Features	MD 500 Series 369H/HE/HM/HS/D/E/F, AH/MH-6 Part number 102200-101	MD 900/902 Series Part number 114001-101
<b>Design Features</b>	Two flat filters, dual entry air inlets, utilizes new composite cowling, new reduced FOD potential bypass system	Two conformal filters, no increased drag penalty, structurally integrated into the existing manufacturer's inlet plenum for simple installation, utilize existing bypass system
<b>Filter Life</b> (Service Cycles)	Up to 7,500 hours (15 cycles every 500 hours)	Up to 4,500 hours (15 cycles every 300 hours)
<b>Emergency Bypass</b>	Inboard-facing flush bypass door protects against dirt and snow; no flight restrictions with bypass open	Utilizes existing MD 900 production aircraft bypass system
<b>Components</b>	Easily accessible and common to other models; includes a cockpit annunciation and activation switch along with a filter maintenance aid for on-condition monitoring while aircraft is on the ground. Environmental Cover for all weather non-operating protection included.	Cockpit annunciation and activation switch is standard MD 900 production aircraft equipment. IBF messaging is through the IIDS display. Environmental Cover for all weather non-operating protection included.
<b>Performance</b>	Certified with Rotorcraft Flight Manual charts for Particle Separator Installed, Scavenge Air Off, Without Mist Eliminator	US, Canada and European certified for use with EAPS charts, Category A operations approved
<b>Certificates</b> (Call for Latest Updates)	United States, Argentina, Brazil, Canada, Europe	United States, Brazil, Canada, Europe, Hong Kong

### donaldson.com

Donaldson Company, Inc.  
Aerospace & Defense Group

1400 W 94th St  
Minneapolis, MN 55431

### North America

aerospace.americas@donaldson.com  
+877-314-9640

### Europe

aerospace.emea@donaldson.com  
+33 1 30 86 66 66

IMPORTANT NOTICE: Many factors beyond the control of Donaldson can affect the use and performance of Donaldson products in a particular application, including the conditions under which the product is used. Since these factors are uniquely within the user's knowledge and control, it is essential the user evaluate the products to determine whether the product is fit for the particular purpose and suitable for the user's application. All products, product specifications, availability and data are subject to change without notice, and may vary by region or country.

F112243 ENG (04/25) ©2025 Donaldson Company, Inc. All rights reserved. Donaldson Company, Inc. reserves the right to change or discontinue any model or specification at any time and without notice.



**Donaldson**  
FILTRATION SOLUTIONS