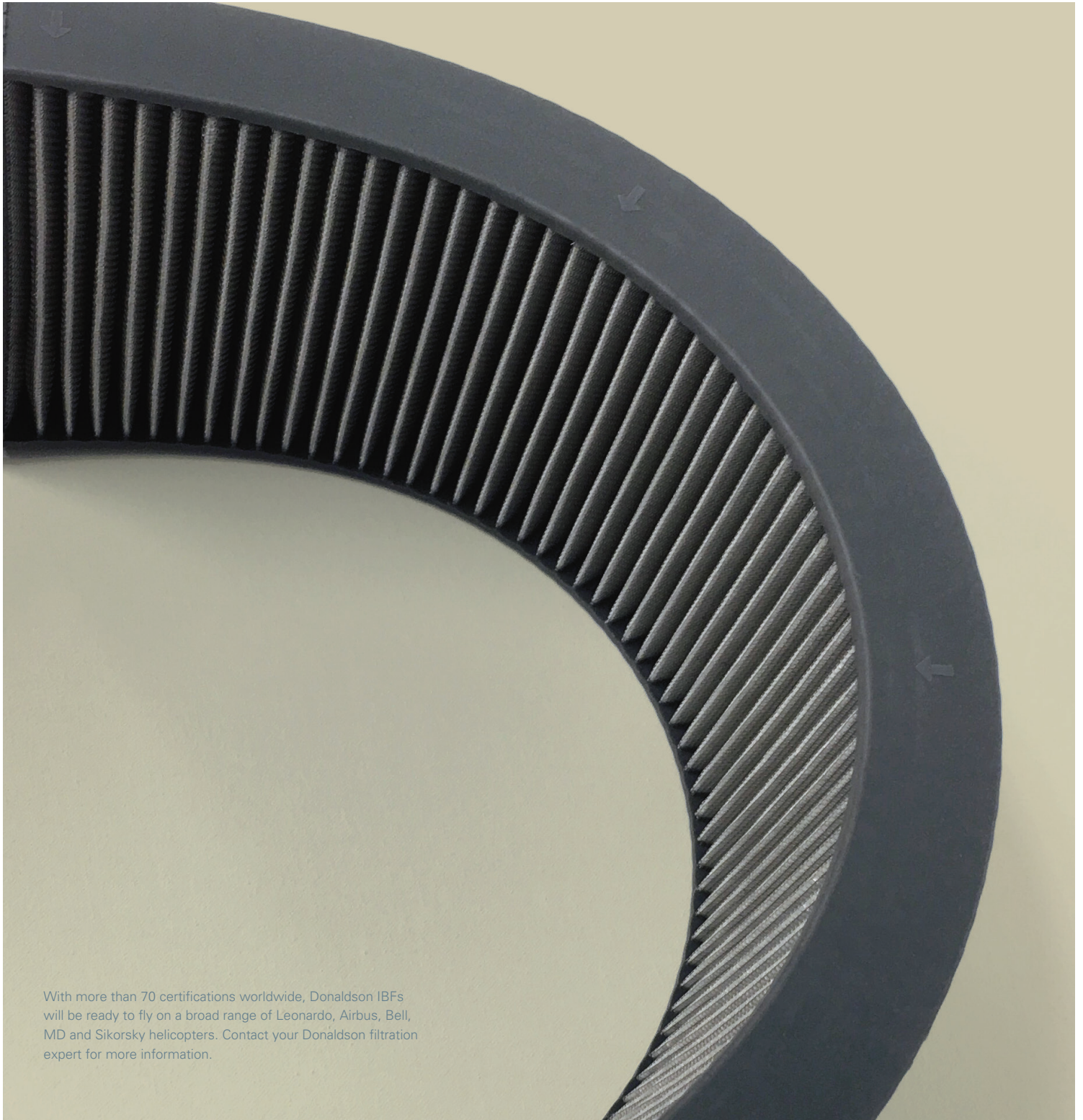


**Inlet Barrier Filters
Non-Woven Dry Media
Rinse with Water**



With more than 70 certifications worldwide, Donaldson IBFs will be ready to fly on a broad range of Leonardo, Airbus, Bell, MD and Sikorsky helicopters. Contact your Donaldson filtration expert for more information.

INSTALL BEFORE FLIGHT

Helicopters routinely contend with dust, sand and debris that attack turbine engines and impact engine reliability, hampering efficient engine operation. Installing an Inlet Barrier Filter (IBF) system is the most effective way to protect engines from damage ranging from lost efficiency to catastrophic failure while adding significant advantages.

Should You Fly Dry?

For decades, helicopter owners and operators have turned to Donaldson for superior engine protection, specifically Inlet Barrier Filters (IBFs) that use woven media that is cleaned and maintained with oil.

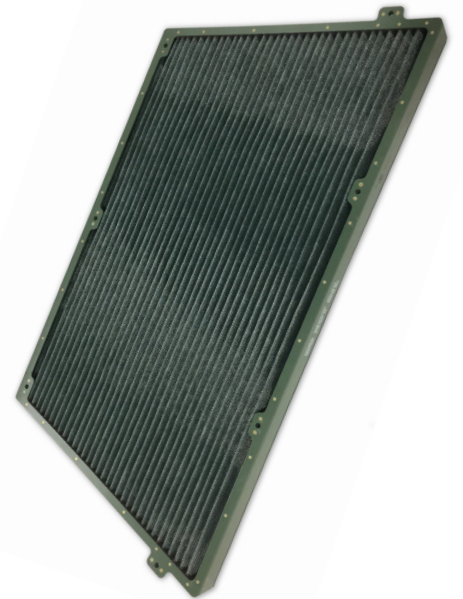
Donaldson also offers a growing range of IBFs that do not require oil. Featuring non-woven dry media, these certified products are quickly and easily cleaned and maintained with water.

Whatever you fly, engine protection is a must to avoid costly damage and downtime. And it makes sense to choose your filtration the same way you choose your aircraft — by mission and environment. That is why Donaldson offers a range of non-woven dry media IBFs, and it is why we continue to develop and certify more.

Compare Donaldson Dry Media IBFs to the Competition

Donaldson's commitment and investment in continual research, world-class engineering, and rigorous testing consistently results in superior helicopter engine filtration.

Testing confirms that Donaldson's dry media Inlet Barrier Filtration is measurably better than a competitive dry media offering.



Bell 407 Dry Media

Donaldson's next-generation non-woven dry media with proprietary Synteq® XP technology. This technology is the key to superior dust holding capacity, directly contributing to meaningful reductions in maintenance requirements.

Donaldson Dry Media IBFs are:

» **More Effective**

Donaldson dry media holds 33% more dust

» **More Efficient**

Donaldson dry media has lower pressure drops, delivering more power to the engine

» **More Durable**

Donaldson dry media is uniquely protected with stainless steel mesh screen

» **More Advanced**

Donaldson uses next-generation, non-woven media with proprietary Synteq® XP technology

*Test conducted on a Bell 407 IBF Filter Assembly, airflow 4788 SCFM, ISO Fine Test Dust, 0.0115 g/ft3 Dust Concentration

Donaldson Company, Inc.

www.donaldson.com • shop.donaldson.com

1400 W 94th St
Minneapolis, MN 55431

North America
aerospace.americas@donaldson.com
Rotorcraft: +877-314-9640
Fixed Wing: +1 952-887-3151

Donaldson Europe
aerospace.emea@donaldson.com
+33 1 30 86 66 66

IMPORTANT NOTICE: Many factors beyond the control of Donaldson can affect the use and performance of Donaldson products in a particular application, including the conditions under which the product is used. Since these factors are uniquely within the user's knowledge and control, it is essential the user evaluate the products to determine whether the product is fit for the particular purpose and suitable for the user's application. All products, product specifications, availability and data are subject to change without notice, and may vary by region or country.

F112281 ENG (05/25) ©2025 Donaldson Company, Inc. All rights reserved. Donaldson Company, Inc. reserves the right to change or discontinue any model or specification at any time and without notice. Printed in the U.S.A.